



**PIANO REGOLATORE GENERALE
in adeguamento al P.P.A.R.**

(D.G.P. n° 309/2005, D.C.C. n°29/2005)

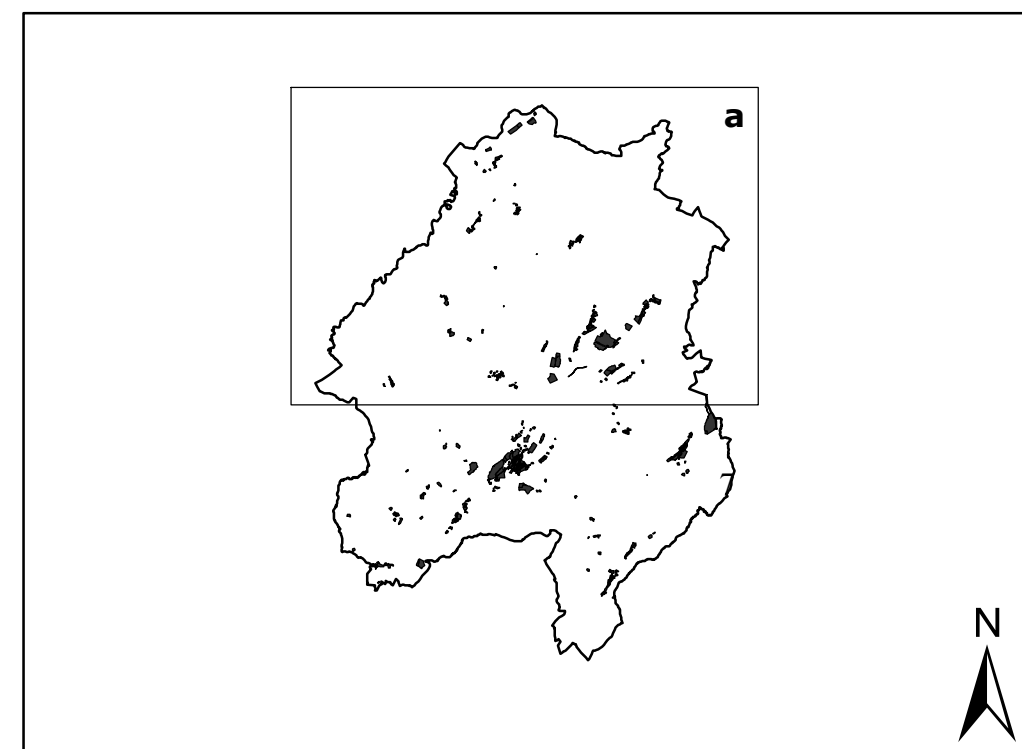
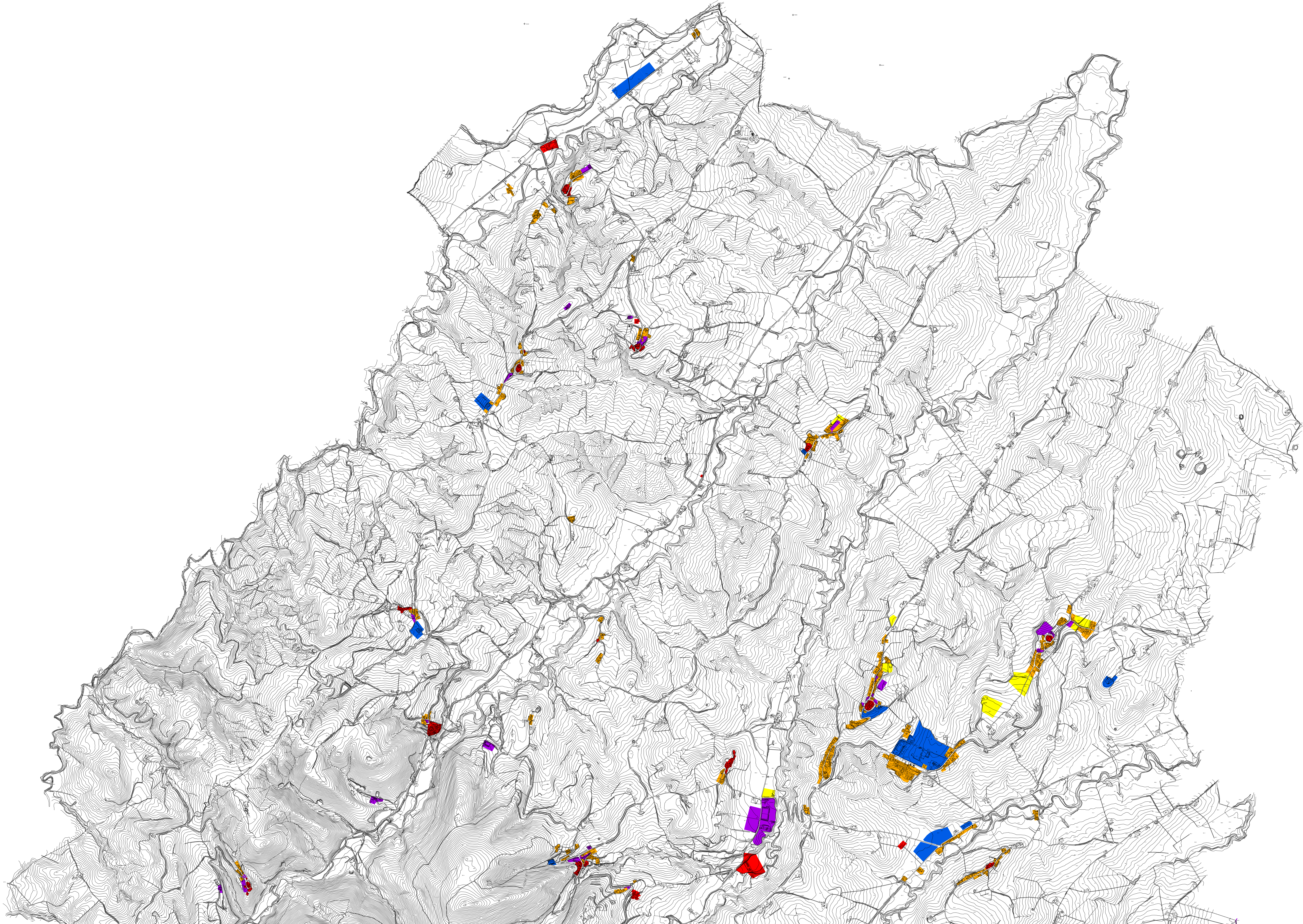




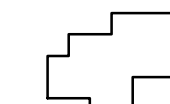



Tavola n° P 5.a scala 1:10000
ZONE TERRITORIALI OMOGENEE
(art. 2, D.M. 1444/68)

settembre 2005



-  ZTO A - Zone storiche
-  ZTO B - Zone edificate
-  ZTO C - Zone di espansione residenziale
-  ZTO D - Zone per insediamenti produttivi
-  ZTO E - Zone agricole
-  ZTO F - Attrezzature ed impianti di interesse generale

Ufficio per la redazione del Piano
 arch. Massimo Bergamo responsabile del progetto
 arch. Lanfranco Manzotti consulente generale
 arch. Monica Bocci progetto
 geol. Massimo Mosca consulente aspetti geologici - geomorfologici
 agr. Alvaro Rossi consulente aspetti botanico - vegetazionali
 dott. Paolo Santini consulente aspetti storico - culturali
 p.i. Manfredo Morici responsabile CAD/GIS