



PIANO REGOLATORE GENERALE
in adeguamento al P.P.A.R.
(D.G.P. n° 309/2005, D.C.C. n°29/2005)

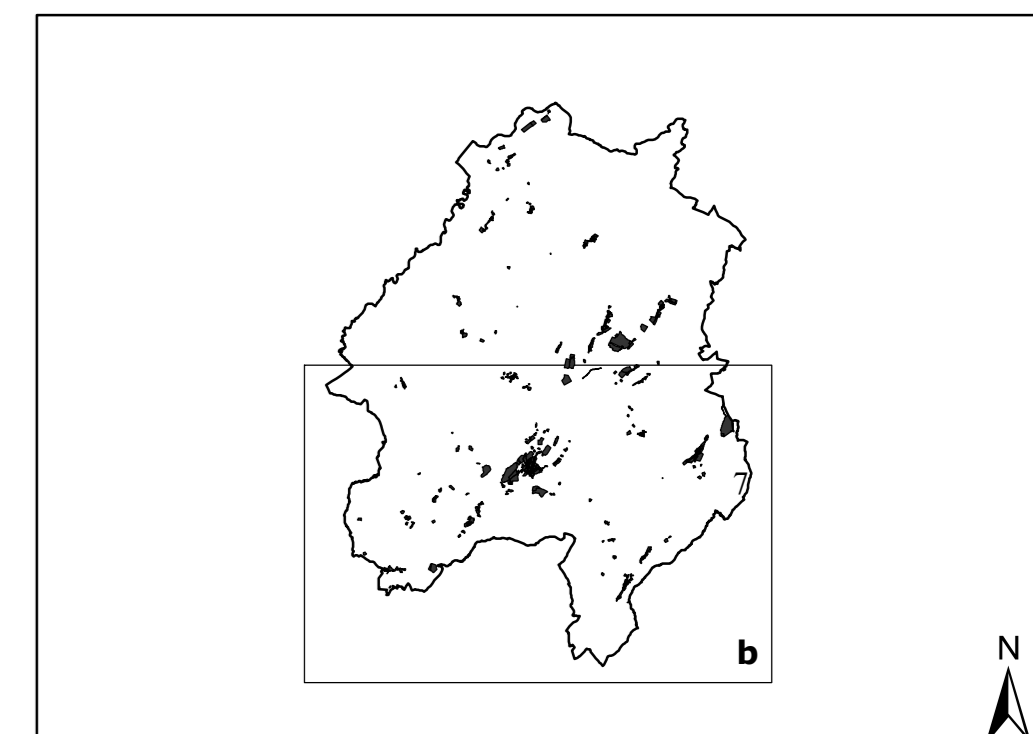
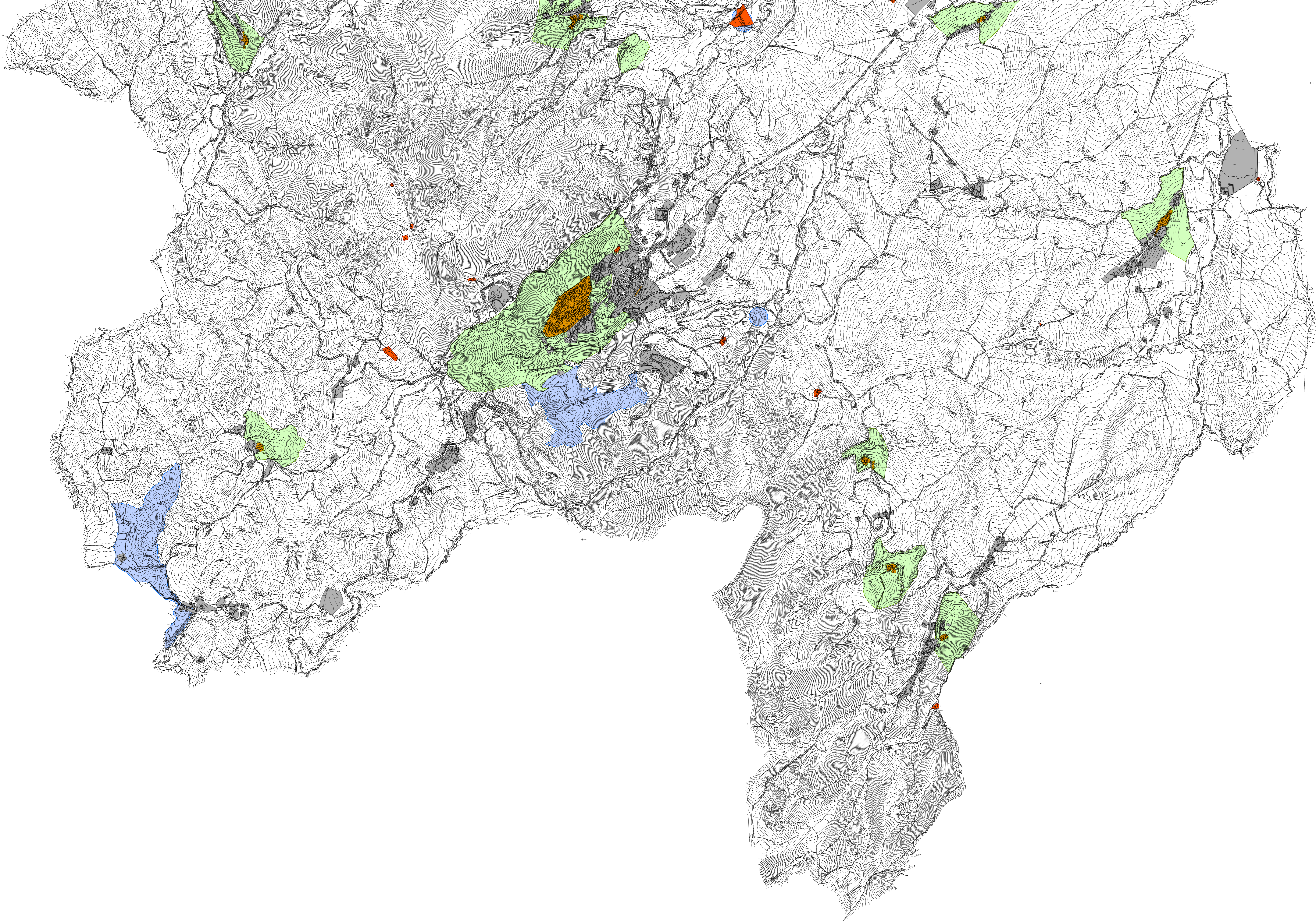








Tavola n° P.3.b scala 1:10000
AMBITI DEFINITIVI DI TUTELA DEL PPAR
SOTTOSISTEMA STORICO-CULTURALE

settembre 2005



-  Aree urbanizzate
-  Centri e nuclei storici - zone A1, A2, A3 (artt. 43, 44, 45 NTA PRG)
-  Ambiti di tutela dei centri storici - zone E1, E1.a, E2 (artt. 72, 73, 74 NTA PRG)
-  Ambito di tutela degli edifici e manufatti storici - zone A4 (art. 46 NTA PRG)
-  Zone archeologiche (art. 34 NTA PRG)
-  Paesaggio agrario storico - zone E1.a (art. 73 NTA PRG)

Ufficio per la redazione del Piano
 arch. Massimo Bergamo responsabile del progetto
 arch. Lanfranco Manzotti consulente generale
 arch. Monica Bocci progetto
 geol. Massimo Mosca consulente aspetti geologici - geomorfologici
 agr. Alvaro Rossi consulente aspetti botanico - vegetazionali
 dott. Paolo Santini consulente aspetti storico - culturali
 p.i. Manfredo Morici responsabile CAD/GIS